

# SERVICE PARTS LIST FOR MITSUBISHI ELECTRIC PACKAGED AIR-CONDITIONERS

**Series : PEA-RP·GA.TH-AF  
PEA-RP·GA.TH-AFMF**

REVISED

Apr. 2009

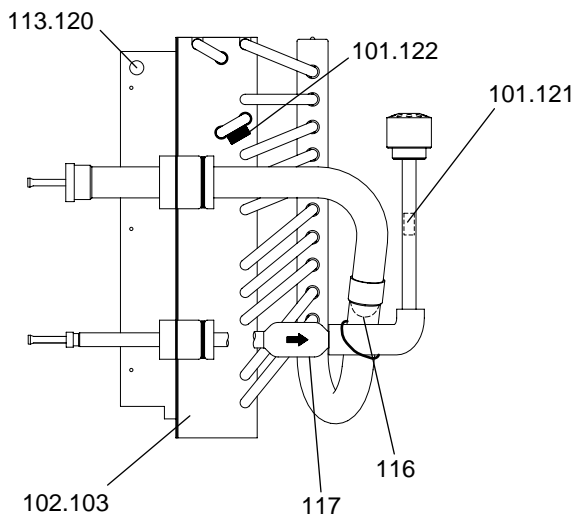
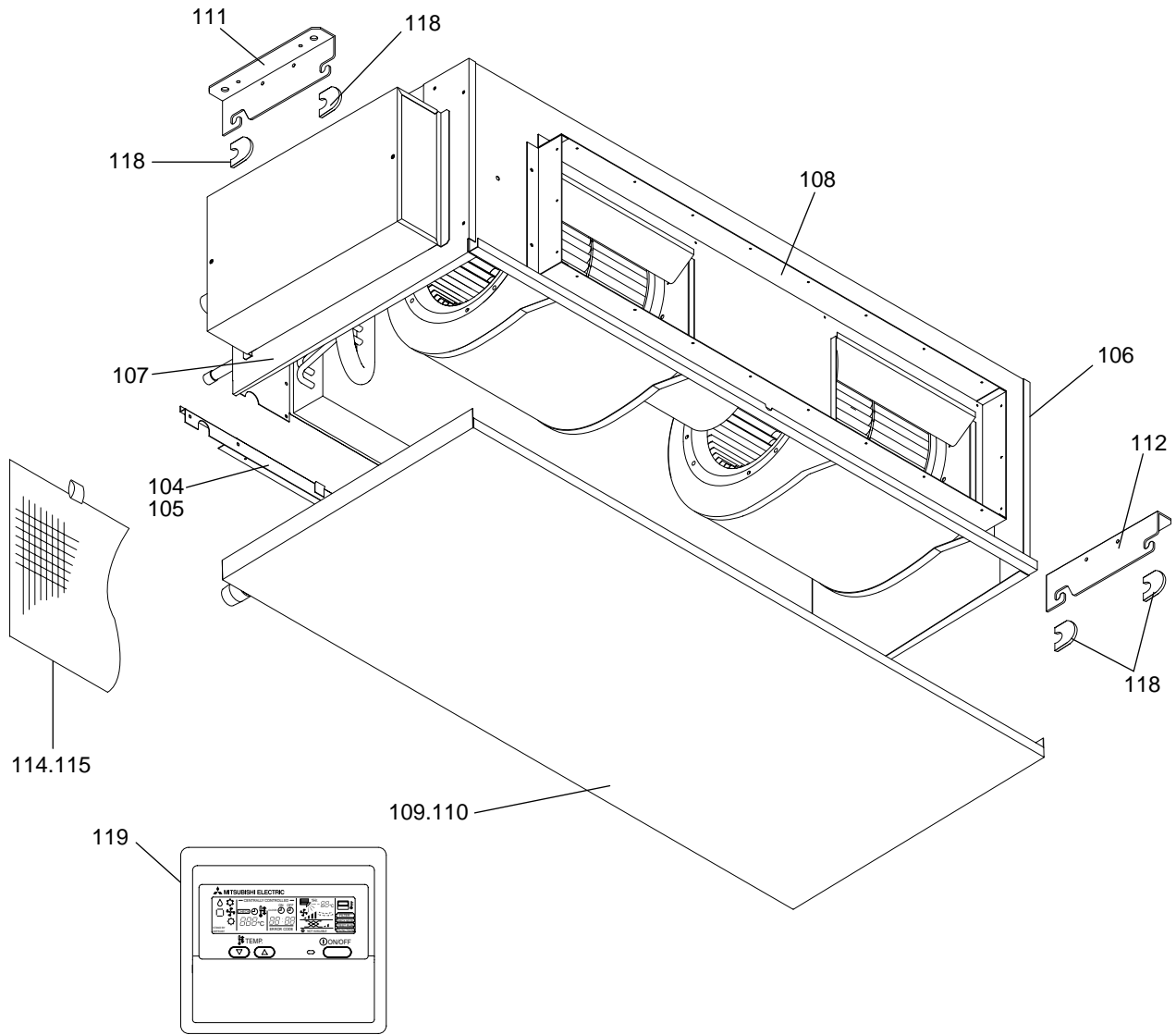
BWE0704A

INDEX
PEA-RP200GA.TH-AF
PEA-RP250GA.TH-AF
PEA-RP400GA.TH-AF
PEA-RP500GA.TH-AF
PEA-RP200GA.TH-AFMF
PEA-RP250GA.TH-AFMF



PEA-RP200GA.TH-AF  
PEA-RP250GA.TH-AF  
PEA-RP200GA.TH-AFMF  
PEA-RP250GA.TH-AFMF

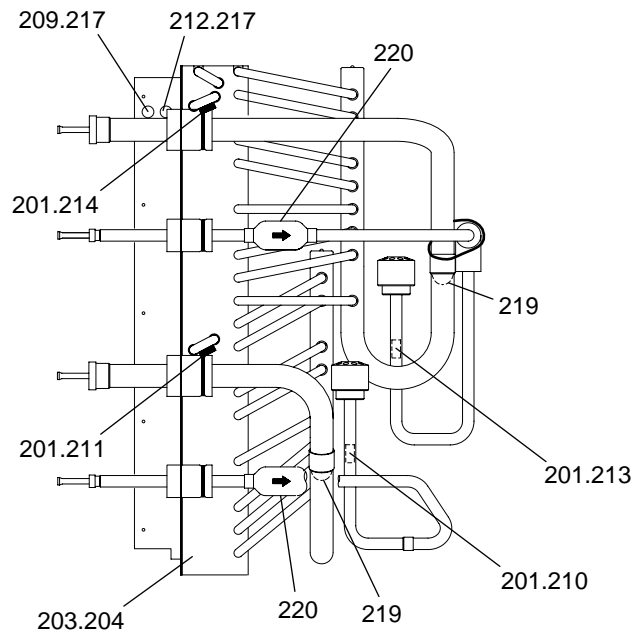
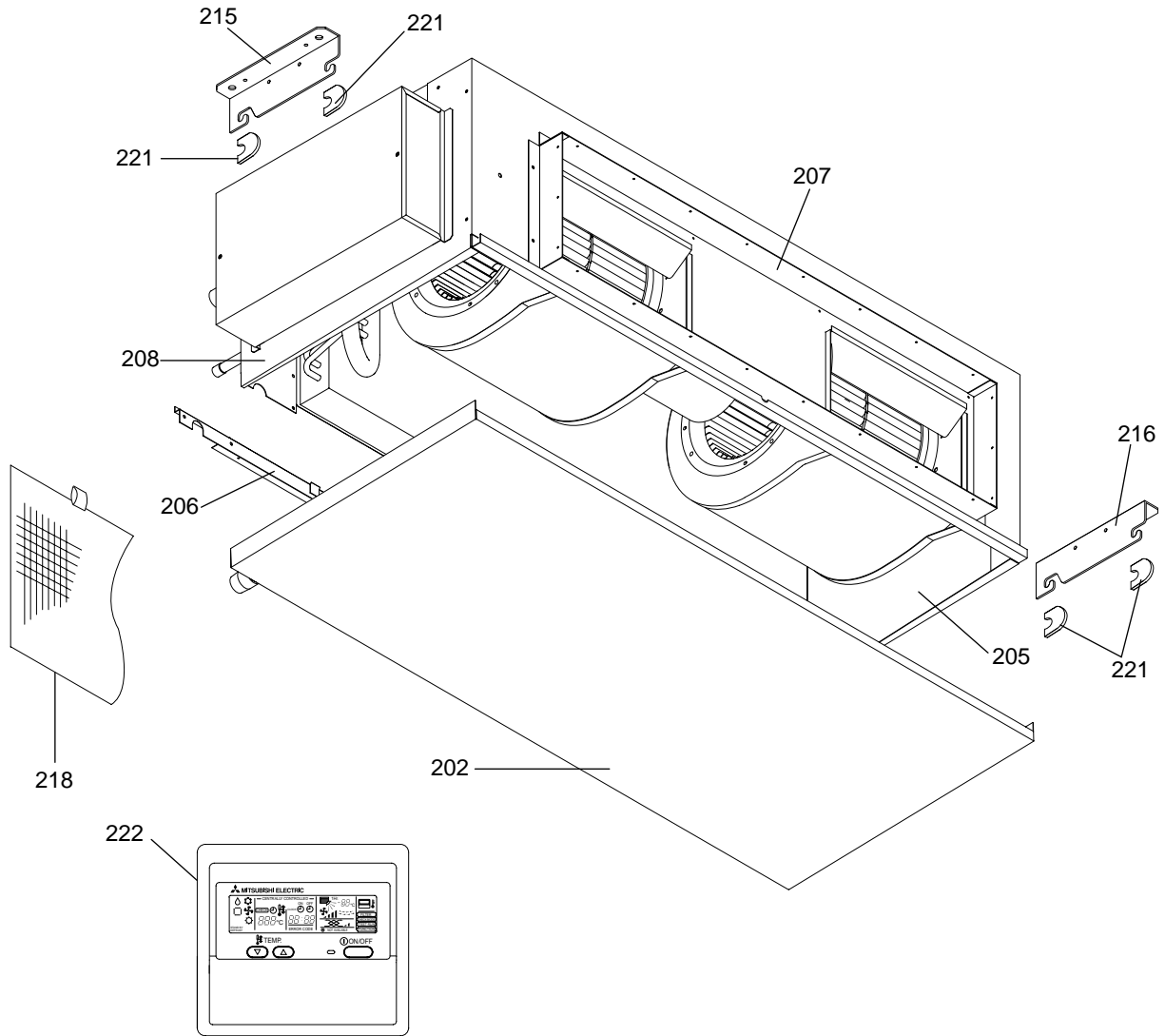
### EXTERNAL PARTS (1)





PEA-RP400GA.TH-AF  
PEA-RP500GA.TH-AF

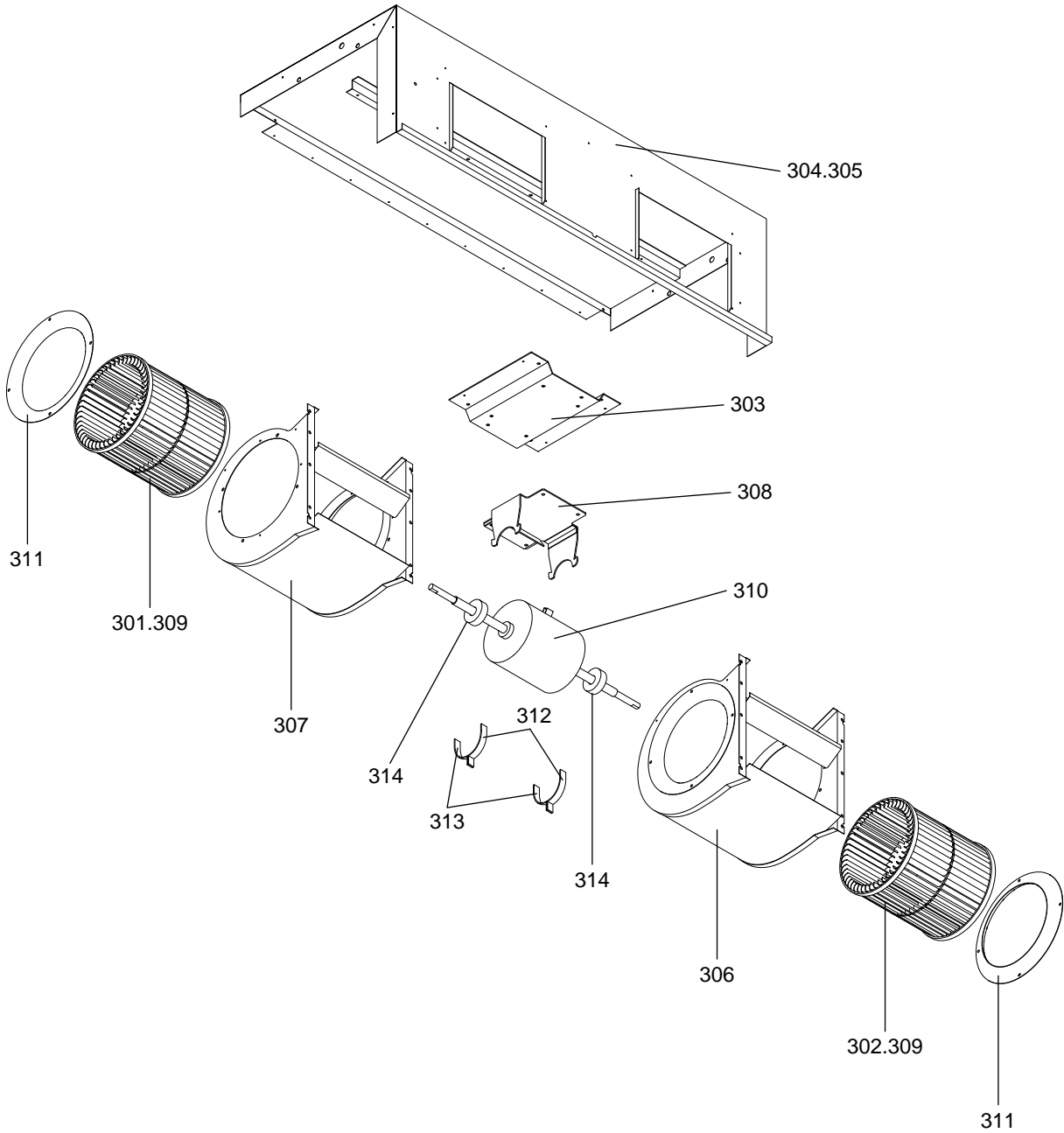
EXTERNAL PARTS (2)



No.	Part No.	G : RoHS Apply Only W : RoHS Apply by Running Change	Part Name	Spec.	PEA-RP400GA.TH-AF	PEA-RP500GA.TH-AF						Dwg. No.	Price	Revision History
201	BG38P815H01	G	TH.SPRING		4	4						BG38P815H01		
202	E17 333 700	G	DRAIN PAN ASSY		1	1						KP00B275G01		
203	E17 355 620	G	HEAT EXCHANGER	<400>	1							KP00B527B07		A
204	E17 356 620	G	HEAT EXCHANGER	<500>		1						KP00B527B08		A
205	E17 333 085	G	PANEL (SR) ASSY		1	1						KP00C631G01		
206	KP00C633G03	G	ATTACHMENT	F.RAIL	1	1						KP00C633G03		A
207	E17 333 709	G	FLANGE ASSY	OUTLET	1	1						KP00C636G03		A
208	E17 333 086	G	PANEL (SL) ASSY		1	1						KP00C639G01		
209	E17 333 308	G	THERMISTOR	ROOM-NO1 TH1-1	1	1						KP00F184G07		A
210	E17 333 307	G	THERMISTOR	LIQ-NO1 TH2-1	1	1						KP00F184G08		A
211	E17 333 309	G	THERMISTOR	COND/EVA1 TH5-1	1	1						KP00F184G09		A
212	E17 334 308	G	THERMISTOR	ROOM-NO2 TH1-2	1	1						KP00F184G10		A
213	E17 334 307	G	THERMISTOR	LIQ-NO2 TH2-2	1	1						KP00F184G11		A
214	E17 334 309	G	THERMISTOR	COND/EVA2 TH5-2	1	1						KP00F184G12		A
215	E17 333 809	G	LEG		1	1						KP02B502G07		
216	E17 333 808	G	LEG		1	1						KP02B502G08		
217	E17 319 013	G	BUSH	SRB-R-2	2	2						KB32K138H01		A
218	E17 333 100	G	FILTER		1	1						KP35G360H01		
219	E17 343 933	G	STRAINER		2	2						KP53F131H02		
220	E17 355 933	G	STRAINER	1/2	2	2						KP53F479H01		
221	E17 328 097	G	SPECIAL WASHER		4	4						KP02F652G01		A
222	E17 159 426	G	REMOTE CONTROLLER		1	1						BG00U396B01		

PEA-RP200GA.TH-AF  
PEA-RP250GA.TH-AF  
PEA-RP200GA.TH-AFMF  
PEA-RP250GA.TH-AFMF

BLOWER PARTS (1)



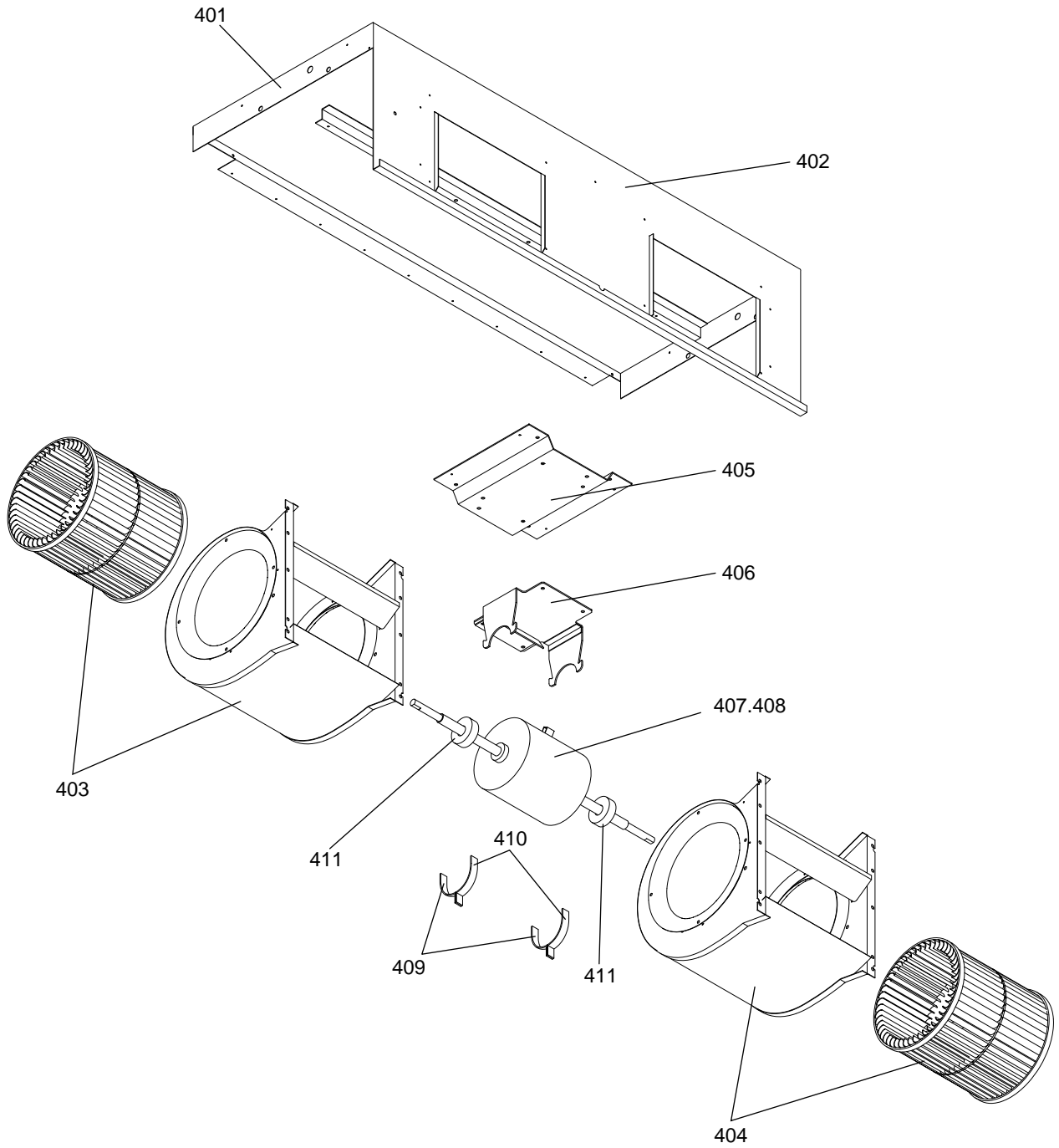
PEA-RP200GA.TH-AF  
 PEA-RP250GA.TH-AF  
 PEA-RP200GA.TH-AFMF  
 PEA-RP250GA.TH-AFMF

BLOWER PARTS (1)

No.	Part No.	G : RoHS Apply Only W : RoHS Apply by Running Change		Spec.	PEA-RP200GA.TH-AF	PEA-RP250GA.TH-AF	PEA-RP200GA.TH-AFMF	PEA-RP250GA.TH-AFMF	Dwg. No.	Price	Revision History
		Part Name									
301	E17 078 500	G	SIROCCO FAN ASSY				1	1	BA00B542G11		
302	E17 077 500	G	SIROCCO FAN ASSY				1	1	BA00B542G18		
303	E17 330 128	G	BASE (MOTOR) ASSY		1	1	1	1	KP00C582G02		A
304	E17 330 297	G	PANEL (TOP) ASSY		1		1		KP00C587G09		A
305	E17 331 297	G	PANEL (TOP) ASSY			1		1	KP00C587G10		A
306	E17 328 237	G	FAN CASING ASSY		1	1	1	1	KP00C589G13		A
307	E17 331 237	G	FAN CASING ASSY		1	1	1	1	KP00C589G14		A
308	E17 330 334	G	MOTOR LEG INS ASSY		1	1	1	1	KP00D672G05		A
309	E17 328 500	G	SIROCCO FAN		2	2			KP25B268G02		
310	E17 332 300	G	MOTOR ASSY	PE-12 KFS4S-773A8P-T	1	1	1	1	KP61D734G02		A
311	R302D730G01	G	BELL MOUTH		2	2	2	2	R302D730G01		
312	R302F328G89	G	ATTACHMENT		2	2	2	2	R302F328G89		
313	R302F328G90	G	ATTACHMENT	With weld nut	2	2	2	2	R302F328G90		
314	E17 018 505	G	RUBBER MOUNT		2	2	2	2	R331F676H01		

PEA-RP400GA.TH-AF  
PEA-RP500GA.TH-AF

BLOWER PARTS (2)

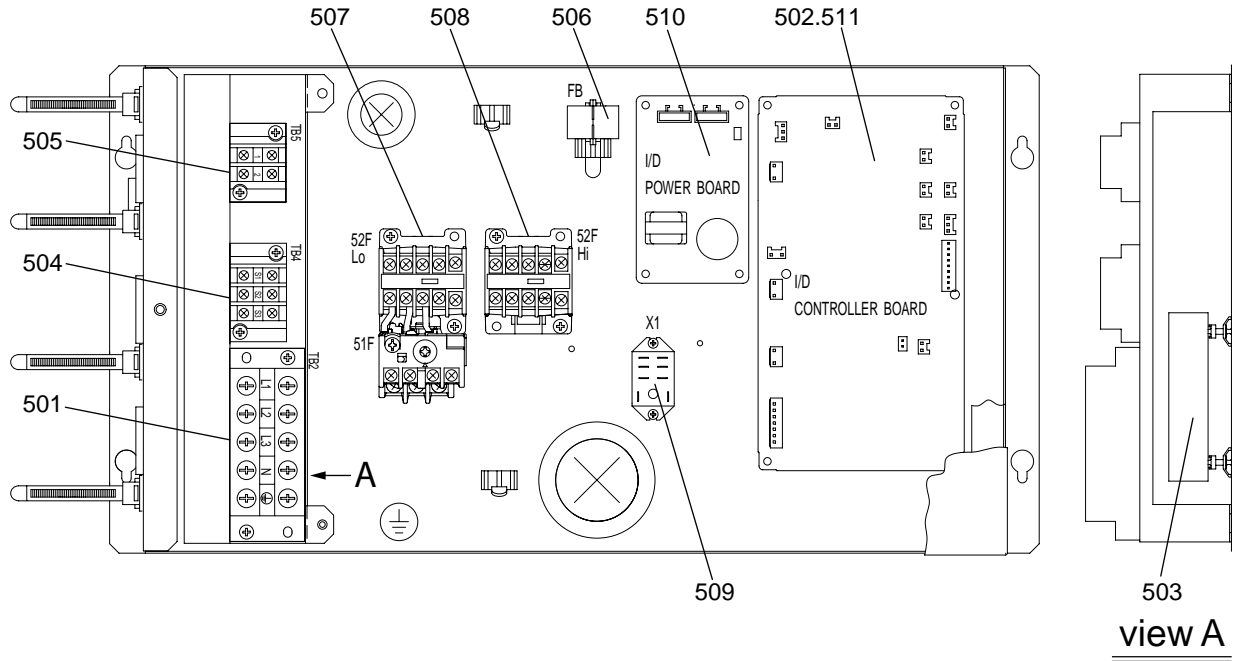




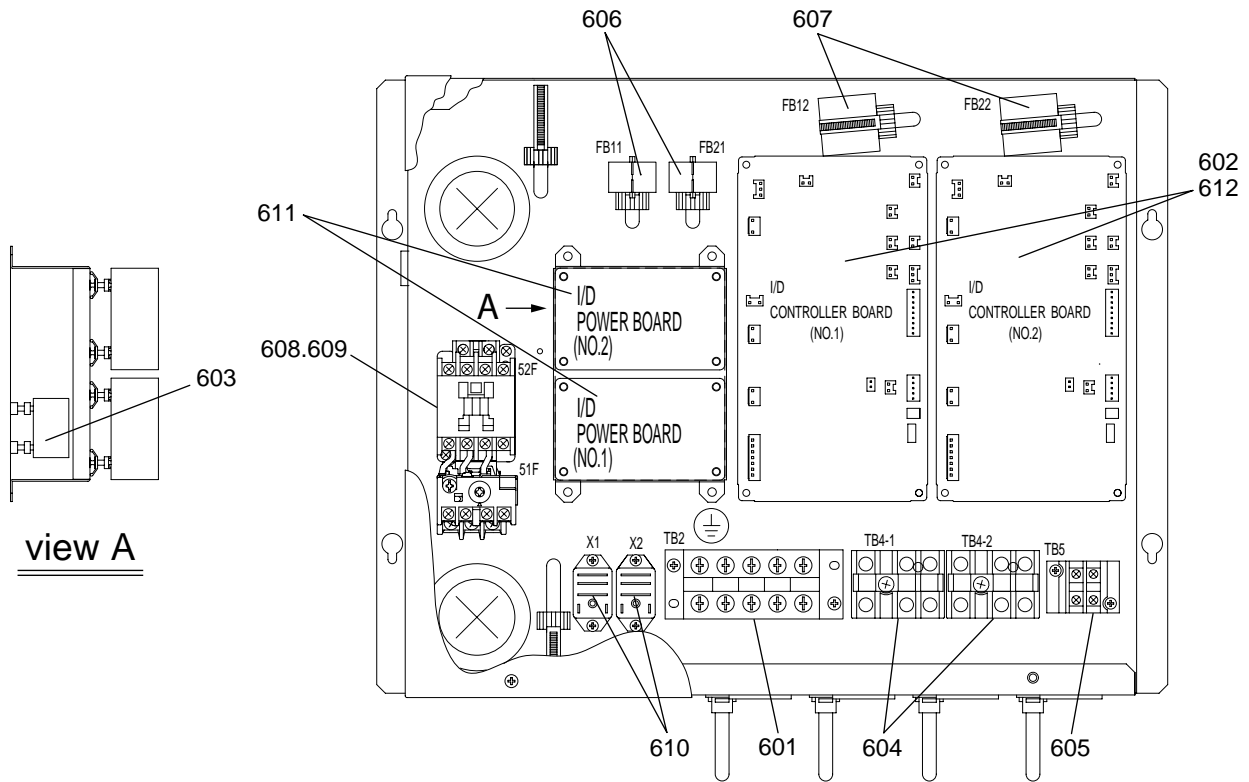


PEA-RP200GA.TH-AF  
 PEA-RP250GA.TH-AF  
 PEA-RP200GA.TH-AFMF  
 PEA-RP250GA.TH-AFMF

CONTROL BOX PARTS (1)



No.	Part No.	G : RoHS Apply Only W : RoHS Apply by Running Change		Spec.	PEA-RP200GA.TH-AF	PEA-RP250GA.TH-AF	PEA-RP200GA.TH-AFMF	PEA-RP250GA.TH-AFMF	Dwg. No.	Price	Revision History
			Part Name								
501	E17 328 375	G	TERMINAL BLOCK	<TB2>	1	1	1	1	BC73L773G05		
502	E17 343 447	G	PCA	I/D CONTROLLER BOARD		1		1	BH00C668F11		
503	E17 328 384	G	PCA	SNB BOARD 1	1	1	1	1	KE95C232F01		A
504	E17 370 374	G	TERMINAL BLOCK	3020 3P <TB4>	1	1	1	1	KP00F094G02		
505	E17 365 374	G	TERMINAL BLOCK	3020 2P <TB5>	1	1	1	1	KP00F094G04		
506	E17 328 394	G	CLAMP FERRITE	<FB>	1	1	1	1	KP65F165H01		
507	E17 330 340	G	MAGNETIC CONTACTOR	PAK-6JTH <52FL0,51F>	1	1	1	1	KP67C898H01		
508	E17 331 340	G	MAGNETIC CONTACTOR	PAK-6J <52FHi>	1	1	1	1	KP67C900H01		
509	E17 364 341	G	RELAY	LY2F <X1>	1	1	1	1	KP67F153H01		
510	E17 262 440	G	PCA	I/D POWER BOARD	1	1	1	1	RG00V959F02		A
511	E17 357 447	G	PCA	I/D CONTROLLER BOARD	1				BH00C668F13		



No.	Part No.	G : RoHS Apply Only W : RoHS Apply by Running Change		Spec.	PEA-RP400GA.TH-AF PEA-RP500GA.TH-AF			Dwg. No.	Price	Revision History
			Part Name							
601	E17 328 375	G	TERMINAL BLOCK	<TB2>	1	1		BC73L773G05		
602	E17 345 447	G	PCA	I/D CONTROLLER BOARD(NO.1)(NO.2)	2	2		BH00C668F12		
603	E17 328 384	G	PCA	SNB BOARD 1	1	1		KE95C232F01		A
604	E17 370 374	G	TERMINAL BLOCK	3020 3P <TB4-1>,<TB4-2>	2	2		KP00F094G02		
605	E17 365 374	G	TERMINAL BLOCK	3020 2P <TB5>	1	1		KP00F094G04		
606	E17 328 394	G	CLAMP FERRITE	<FB11>,<FB21>	2	2		KP65F165H01		
607	E17 333 394	G	CLAMP FERRITE	ESD-SR <FB12>,<FB22>	2	2		KP65F183H01		
608	E17 334 340	G	MAGNETIC CONTACTOR	PAK-11JTHC <52F,51F>	1			KP67C898H04		
609	E17 333 340	G	MAGNETIC CONTACTOR	PAK-11JTHC <52F,51F>	1			KP67C898H05		
610	E17 364 341	G	RELAY	LY2F <X1Lo>,<X2Hi>	2	2		KP67F153H01		
611	E17 262 440	G	PCA	I/D POWER BOARD(NO.1)(NO.2)	2	2		RG00V959F02		A
612	E17 359 447	G	PCA	I/D CONTROLLER BOARD(NO.1)(NO.2)	2			BH00C668F14		

